

BERKS COUNTY HARLEY OWNERS GROUP
CLASSIC HARLEY—DAVIDSON
P.O. BOX 708
LEESPORT, PA 19533

BERKS COUNTY, PA CHAPTER HARLEY OWNERS GROUP

CHAPTER #4579



NEW MEMBER BOOK

CHAPTER INFORMATION

Sponsored By:

CLASSIC
HARLEY-DAVIDSON



P.O. BOX 708 LEESPORT, PA 19533 610-916-7777

www.classicharley.com E-mail: sales@classicharley.com

MEMBER NOTES

[illegible]

New Member,

Welcome to the Berks County PA chapter of the Harley Owners Group (HOG). On behalf of our members, officers, and sponsor, Classic Harley-Davidson, we are happy to include you as an important part of our chapter. Whether you are a new or experienced rider, we look forward to becoming acquainted with you and having you become an active part of our chapter. We promote enthusiasm for safe and fun riding of our Harley-Davidson motorcycles to a multitude of activities and destinations throughout the year.

We encourage you to review the information provided in this book. We hope it's a useful resource of our chapter's safety information, rides, and events. We invite you to be part of all of our activities and ask that you contact any chapter officer or Classic Harley-Davidson staff for additional details.

Ladies are invited to join our Ladies of Harley (LOH), established for women who do or do not ride their own motorcycle. Contact our LOH officer for additional details.

Each of you are invited to join us on one of several New Owner / New Member Rides held throughout the year. This small group ride will allow us to personally get to know you and discuss safe group motorcycle riding. These scheduled rides will be announced at chapter meetings and posted on our Events Calendar. Contact our Assistant Director for additional details.

Thank you for joining Berks County HOG. We look forward to your participation. Enjoy the adventure!

The Officers of Berks County HOG

Your volunteer staff of HOG Officers were once members like you. When the need arose for a new person to take over from a previous officer, they stepped forward. Perhaps that is something you are considering, too. Please feel free to speak to any officer if you might be interested in lending your help to our Chapter!



This image shows a full page of blank white paper with horizontal ruling lines. The lines are evenly spaced and run across the width of the page, providing a template for writing or drawing. There are no margins, text, or other markings on the paper.

[illegible]

NATIONAL HOG PROGRAMS

Contact the National H.O.G. Office for questions concerning H.O.G. membership benefits and programs, national membership renewals and H.O.G. events.

800-CLUB-HOG (258-2464)

www.hog.com and members.hog.com

HOG ABC's of Touring



HOG Mileage Program



HOG Safe Rider Skills



HOG Fly & Ride



BERKS COUNTY HOG OFFICERS

EDITOR OF THE NEWSLETTER

AMY HICKS
610-488-1076
Editor@hog.classicharley.com

WEBMASTER

BOB CHUBB
484-363-0454
webmaster@hog.classicharley.com

PHOTOGRAPHER

WENDY CHUBB
484-363-0455
Photographer@hog.classicharley.com

SAFETY OFFICER

DAVE WEIK
610-927-3536
Safety@hog.classicharley.com

ROAD CAPTAIN

GEORGE MILLER
610-856-5077
RoadCaptain@hog.classicharley.com

ROAD CAPTAIN

SCOTT ROMICH
610-763-9217
RoadCaptain@hog.classicharley.com

ROAD CAPTAIN

JOE McELWEE
610-582-7428
RoadCaptain@hog.classicharley.com

ROAD CAPTAIN

CARL ORTH
610-763-3193
RoadCaptain@hog.classicharley.com

BERKS COUNTY HOG WEB SITE

www.hog.classicharley.com

The new member registration process for the web site is provided on the homepage of the web site

A computer generated password will be e-mailed to you after registration. To change to a new password you can remember, login with your user name and the computer generated password. Scroll down to the bottom of "Profile" page, look for "New Password" and enter a new password then re-enter it again in the box below. Then Select "Update Profile"

If you need registration assistance, contact the Web Master

WEB SITE FEATURES

- Berks County HOG information
- Ladies Of Harley (LOH) information
- Events (Calendar)
- Officer Contact Information and photos
- Newsletter ~ You must Login to web site to view the newsletter or you can view it by scrolling down to the bottom of the right side menu bar, Select "Newsletters", then Select the newsletter you want to view.
- Photos of Chapter Events
- Programs ~ Road Warrior, Polar Bear, etc...

BERKS COUNTY HOG NEWSLETTER

The chapter newsletter is composed monthly by our chapter editor and it contains chapter information, photos, event calendar, along with officer's and sponsor's reports.

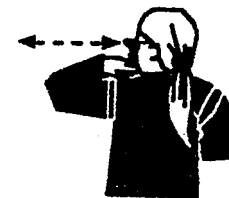
Members can obtain a copy of the chapter newsletter:

- From the Berks County HOG Web Site as described above
- A printed hard copy is available at Classic Harley-Davidson's Parts Department and at all Chapter Meetings

HAND SIGNALS



Comfort Stop



Cut engines



Left turn



Stop



Blinkers are on



Hazard in road

HAND SIGNALS



Start-up

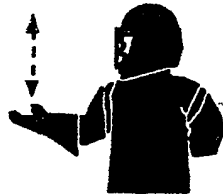
Single file



Double file



Pull over



Speed up



Slow down



Right Turn



LADIES OF HARLEY

Ladies of Harley (LOH) was established to help women become more active members of HOG and their local Chapter, whether they ride or not.

Monthly meetings are held generally the first Wednesday of each month and the location varies. LOH event details and additional information can be found on the Berks County HOG Website and in the Chapter Newsletter.

For additional information contact our LOH Officer



MEMBER'S MEETING

Held the second Thursday of each month at 7:30 PM at the Gouglersville Fire Company social hall located off the Gouglersville exit of Route 222, South of Shillington, PA

Chapter Officers and our sponsor Classic Harley-Davidson announce upcoming events and provide important reports. Members have an opportunity to announce ideas and suggestions. It is also a great place to meet and get acquainted with other members and friends.

If you miss a chapter meeting be sure to see the HOG Events Calendar and Newsletter on the web site.

HOG EVENTS CALENDAR

Sun	Mon	Tue	Wed	Thu	Fri	Sat
					1	2
3	4	5	6	7	8	9
10	11	12	13	14	15	16
17	18	19	20	21	22	23
24	25	26	27	28	29	30
31						

The key feature of our what, where, and when of Chapter events and rides including important dealer events.

NOTE: Chapter Events and Rides are open to everyone unless noted within the calendar as MO = Members Only or CL = Members/Guests Only

Locate the calendar at the following locations:

- Within the Berks Hog Web Site under the Events tab (see page 4)
- Monthly Chapter Meetings
- Listed on the front page of the Chapter Newsletter
- Classic Harley-Davidson's Part Department

BERKS COUNTY HOG HOT LINE



Check the status of scheduled chapter rides or events, including cancellations due to bad weather.

Call the Hot Line for a recorded message.

610-926-3380

NEW MEMBER AND NEW OWNERS RIDES

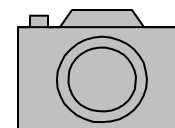


Experience the thrill of getting to know Berks County HOG and group riding by joining our Assistant Director and several chapter officers on an introductory small group ride specifically for new members and new owners. This opportunity will allow us to personally get to know you and discuss safe group motorcycle riding.

New Member and New Owner Rides also include a classroom overview of the chapters group riding and safety information by the Safety officer prior to the ride.

These ride schedules will be announced at chapter meetings and posted in our Events Calendar and will leave and return to Classic Harley-Davidson. Contact the Assistant Director for more information. First time group riders and guests are always welcome.

PICTURE — PICTURE



Of our new members

The Chapter Photographer captures wonderful pictures of all new members at one time or another for publication in the Berks County HOG Newsletter, to help us put new names to new faces.

Keep Smiling!

BERKS COUNTY HOG SAFE RIDING

(Continued from page 9)

8. Passing. When passing, the Road Captain will signal that the group is going to pass. The Road Captain will pull into the passing lane to pass and the group will follow in riding order. Use signals and do a mirror check and a head check of your blind spot.
9. Separated from the group in front of you? RELAX! You will not be left behind. Proceed only when it is safe to do so and at a safe speed. The last rider of the group in front of you will wait for you at the intersection of any point the group turns off the main road.
10. IMPORTANT—Anytime the group is separated into two or more groups the last rider of the forward group shall wait at a safe and visible location near the intersection of any point the group turns off the main road. This identifies every location that the group turns from the main road and prevents anyone from being lost and left behind.
11. Riding side by side is dangerous, and we prefer the only time motorcycles are side by side is when the group is stopped at an intersection or parked.
12. When in a tight curve, the rider on the outside of the curve is required to give room to the rider on the inside in case the curve is too tight to negotiate without excessive crowding.
13. If you plan to separate from the group at anytime notify the road captain prior to departing on the ride.
14. There are many additional safety concerns when participating in a group ride and too numerous to include. Contact the Safety Officer or Road Captain for additional information.

ROAD WARRIORS

Berks County HOG Mileage Recognition Program

EVERY mile counts toward our Million Mile Chapter goal. Even if you don't ride the required number of miles for recognition, please help us reach our goal by participating. Member riders, and up to one passenger, who accumulate a minimum of 10,000 miles in a one year period are recognized. Name, motorcycle VIN #, and odometer miles are required to be registered to participate and can be obtained at any time during the year. Final miles will be recorded at the end of the program, usually in November. To register or obtain rules contact our Assistant Director or any other officer.

ADDITIONAL MEMBER INFORMATION

1. All Berks County HOG members are required by HOG to maintain their membership in National HOG. See page 14 for national membership information.
2. Chapter events are open to everyone unless noted in the chapter HOG Events Calendar (page 6) as Members Only or Members/Guests Only. According to chapter bylaws, as members you are entitled to bring guests to two events. We hope after experiencing a great time at those events your guest will join the National HOG and Berks County HOG. (Note: The two event rule is not applicable to dependent children of our members).
3. Our guests are required to complete and sign a chapter event release form prior to riding on a chapter ride. Please contact the ride's road captain or other officers.
4. **GOOGLE Groups** is used by Berks County HOG to communicate informal information amongst subscribed members. See the Berks County HOG Website Home Page to subscribe your email address (page 4).
5. Member suggestions and ideas for chapter rides and events are always appreciated. Please contact any Officer or Road Captain to share your thoughts.



BERKS COUNTY HOG SAFE RIDING

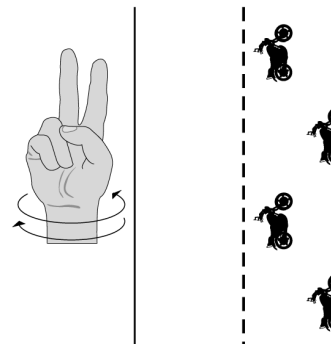
Safety is a personal responsibility. Every rider and passenger is ultimately responsible for their own safety! Know your skills and never ride outside your own comfort or skill level! If it is not safe to pass, go through an intersection, or turn, **DON'T DO IT!** Poor road conditions or visibility, **SLOW DOWN!**

1. For safety questions and concerns contact our Safety Officer or any of the Road Captains or Officers prior to departure.
2. Participate in Safe Rider Skills Programs organized and announced by our Safety Officer.
3. Road Captains will identify the lead and sweep riders, provide information on the destination, stops, and the planned route prior to departure. New riders may also wish to identify themselves to the Road Captains.
4. Perform a safety check on your motorcycle and have your gas tank filled prior to departure. The Road Captain will make gas stops at appropriate mileage intervals to meet gas and break needs.
5. Hand signals will be used for turning, passing, slowing down, and pointing out road hazards. These signals should be passed back through the group. (see page 12 & 13)

(Continued)

BERKS COUNTY HOG SAFE RIDING

6. Staggered formation riding is the primary group riding formation. The Road Captain will ride in the front left 1/3 lane, the second motorcycle in the right 1/3 lane at least one second behind the first rider, and so on.
 - a) Always stay inline with the motorcycle in front of you and do not switch between the left and/or right side of the lane.
 - b) Leave enough room between each motorcycle so that any rider can maneuver to the right or left without hitting anyone else.
 - c) If a rider drops out of the formation **DO NOT** move forward to fill the open position. **DO NOT** pass others.



7. Single file riding on narrow roads or when a hand signal is indicated by the rider in front of you. Maintain two seconds behind one another. The lead rider determines on which side of the lane the group will ride.

